

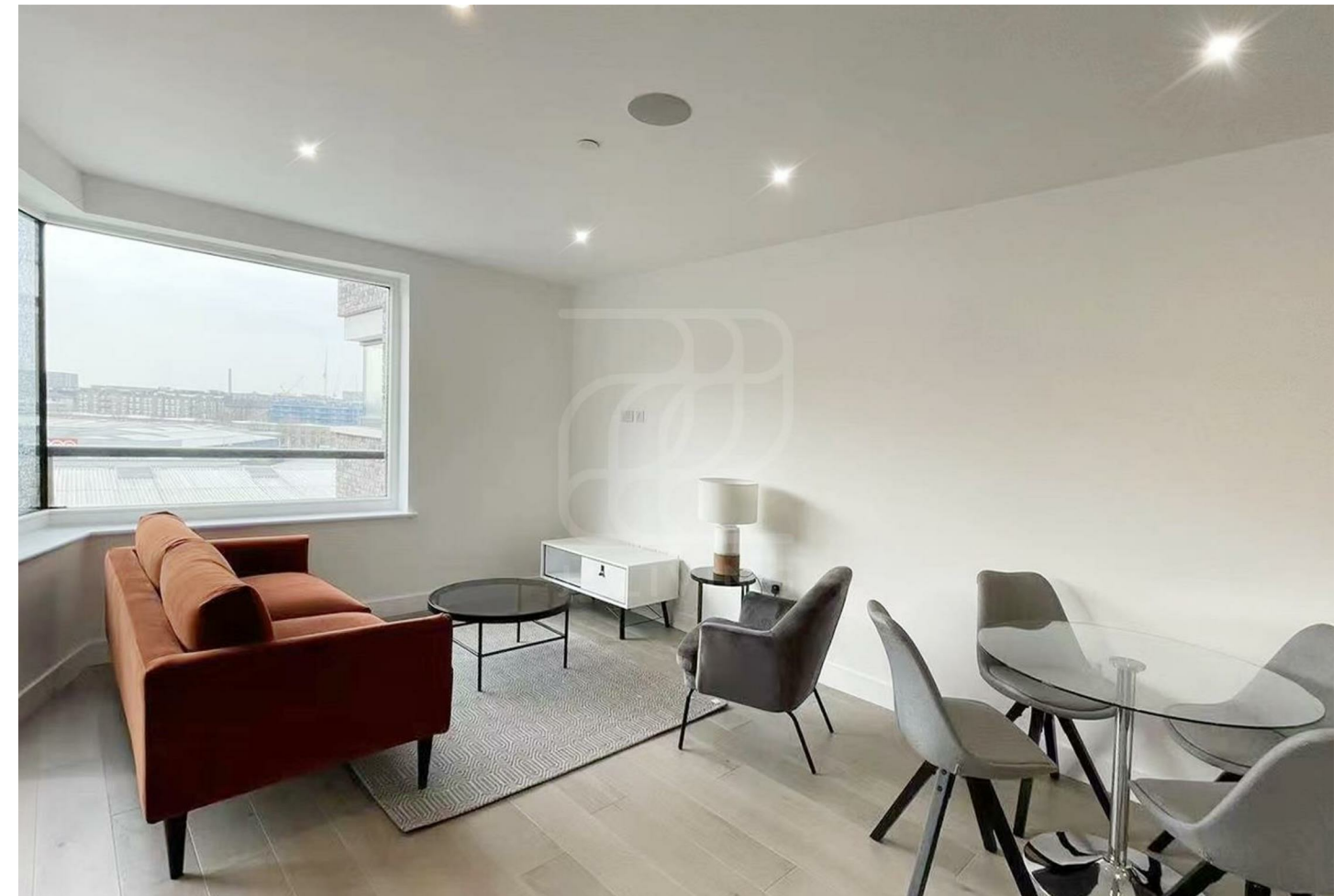
### Directions

### Viewings

Viewings by arrangement only. Call 02033696888 to make an appointment.

### EPC Rating

Energy Efficiency Rating		
	Current	Potential
Very energy efficient - lower running costs		
(92 plus) <b>A</b>		
(81-91) <b>B</b>		
(69-80) <b>C</b>		
(55-68) <b>D</b>		
(39-54) <b>E</b>		
(21-38) <b>F</b>		
(1-20) <b>G</b>		
Not energy efficient - higher running costs		
<b>England &amp; Wales</b>	EU Directive 2002/91/EC	



NZ127, The Crosse 2 New Tannery Way, London, SE1 5ZW

£877 Per Week

# The Crosse 2 New Tannery Way, SE1 5ZW

JCLiving is proud to present this spacious two-bedroom, two-bathroom apartment at The Crosse, 2 New Tannery Way, SE1.

The Crosse forms part of the highly sought-after London Square Bermondsey development. Located in the vibrant and trendy hub of Bermondsey, this contemporary apartment offers the perfect blend of urban energy and tranquil living, just moments from the architectural landmarks and world-class transport links of London Bridge.

The location is wonderfully positioned for the City, Canary Wharf, and the West End. Bermondsey Underground Station (Jubilee Line) and London Bridge Station (Northern Line and National Rail services) are both within walking distance, providing swift connections to central London and beyond. Beyond the front door, you are perfectly positioned to enjoy the vibrant energy of Bermondsey Street, renowned for its artisanal coffee shops, celebrated galleries, and Michelin-standard dining, while the culinary delights of Borough Market and the cultural attractions of the South Bank are just moments away.

This exceptional two-bedroom, two-bathroom apartment is offered fully furnished and ready to move in from 20th July.

Viewings are warmly welcomed – please quote reference JC25071839 to arrange an appointment.



Council Tax Band:

